

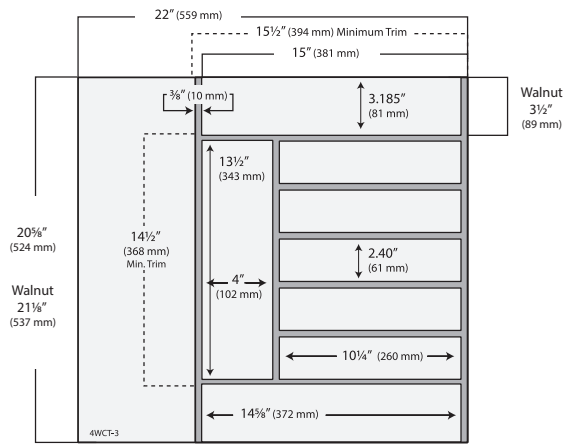
4WCT SERIES

WOOD CUTLERY TRAY INSERT

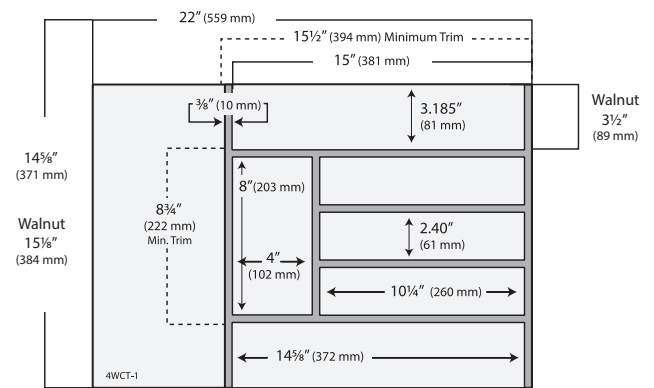
- Made of our walnut or maple hardwood
- Simple drop-in installation
- Trimmable to fit various drawer sizes
- Deep or shallow options available
- Carb II compliant



For video visit:
rev-a-shelf.com/videos



4WCT-3



4WCT-1

DRAWER ACCESSORIES

PRODUCT #	DESCRIPTION	PRODUCT DIMENSIONS	MINIMUM TRIM	FINISH	SET PER CTN	WHT PER CARTON	SUGGESTED LIST PRICE
Shallow Height Walnut Cutlery Tray							
4WCT-WN-1SH	Shallow Height Trimmable WN Cutlery Tray	15 1/2" (384 mm) W x 22" (559 mm) D x 2 3/8" (60 mm) H	8 3/4" (222 mm) W x 15 1/2" (394 mm) D	Walnut	1	6 lb.	\$91.80
4WCT-WN-1SH	Shallow Height Trimmable WN Cutlery Tray	21 1/8" (537 mm) W x 22" (559 mm) D x 2 3/8" (60 mm) H	14 1/4" (362 mm) W x 15 1/2" (394 mm) D	Walnut	1	8 lb.	\$124.10
Shallow Height Wood Cutlery Tray (Individual Pack)							
4WCT-1SH	Shallow Height Trimmable Cutlery Tray	14 5/8" (371 mm) W x 22" (559 mm) D x 2 3/8" (60 mm) H	8 3/4" (222 mm) W x 15 1/2" (394 mm) D	Maple	1	6 lb.	\$47.25
4WCT-3SH	Shallow Height Trimmable Cutlery Tray	20 3/8" (524 mm) W x 22" (559 mm) D x 2 3/8" (60 mm) H	14 1/4" (362 mm) W x 15 1/2" (394 mm) D	Maple	1	8 lb.	\$61.90
Wood Cutlery Tray (Individual Pack)							
4WCT-1	Trimmable Cutlery Tray	14 5/8" (371 mm) W x 22" (559 mm) D x 2 7/8" (73 mm) H	8 3/4" (222 mm) W x 15 1/2" (394 mm) D	Maple	1	6 lb.	\$48.00
4WCT-3	Trimmable Cutlery Tray	20 3/8" (524 mm) W x 22" (559 mm) D x 2 7/8" (73 mm) H	14 1/4" (362 mm) W x 15 1/2" (394 mm) D	Maple	1	8 lb.	\$63.10